

# CX-SUPERVISOR V3

Powerful machine visualisation



» Easy to use

» Feature rich & functional

» Supports open standards

# V3, power and convenience

*If you're familiar with CX-Supervisor, then like many automation professionals, you probably love its ease-of-use, its full visualisation, its instant overviews, and its advanced functionality – the type you only expect from much more expensive packages.*

*Now, prepare yourself for the new CX-Supervisor V3. It's more powerful, more convenient and more versatile than ever – take a look at how you can benefit:*

## **Easier, faster fine-tuning**

The new data log viewer allows you to quickly and easily compare the process parameters of one week against those of another – enabling you to identify which settings work best.

## **Extended graphics library**

It now supports “Smart Graphics” with embedded animations. In addition you can easily create your own objects so your virtual machine looks just like the yet-to-be-built one.

## **One-click simulation**

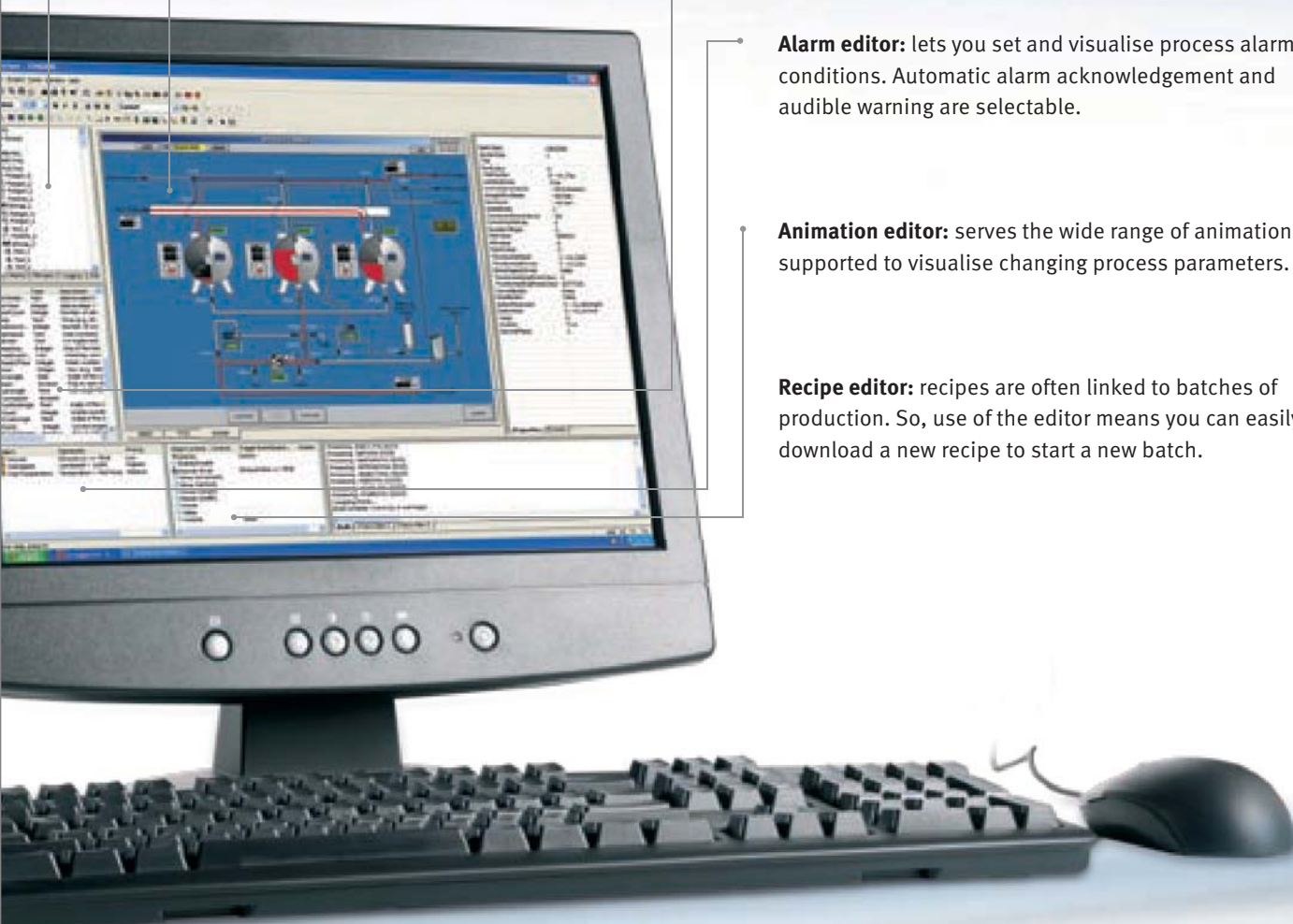
Spectacular, instant simulations that test your applications with a single click of a mouse.

## **Remote maintenance**

See the exact status of your application from anywhere in the world – without modifying your application. Simply use your web browser to securely access your application and monitor its status.



## Plus all the functionality you've enjoyed so far



**Complete project overview on screen:** the workspace window (fully dockable) gives you a complete overview of your project. Clicking on a page in the main view shows all objects and animations on that page. You can also see all the alarms, recipes, logging and database connections.

**Page editor:** shows project pages and lets you create new pages. Simply adjust the zoom for intricate HMIs.

**Point editor:** lists all project points, which can easily be imported from other CX applications. Enables easy and direct reuse of symbols used in CX-Programmer.

**Alarm editor:** lets you set and visualise process alarm conditions. Automatic alarm acknowledgement and audible warning are selectable.

**Animation editor:** serves the wide range of animations supported to visualise changing process parameters.

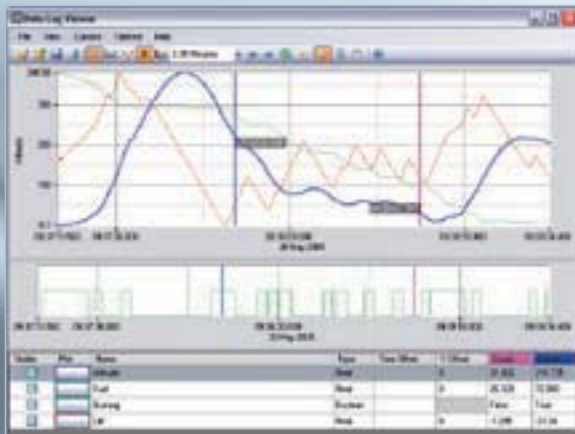
**Recipe editor:** recipes are often linked to batches of production. So, use of the editor means you can easily download a new recipe to start a new batch.

# Continuous performance improvement

## Analyse at a glance

The improved data log viewer gives you the best way yet to continuously fine-tune your machine and optimise its performance, all in a simple visual way. You can overlay one week on top of another, and identify anomalies at a glance. You can compare one week against another or one month against another, no more guess work, just quick and easy identification of what works best.

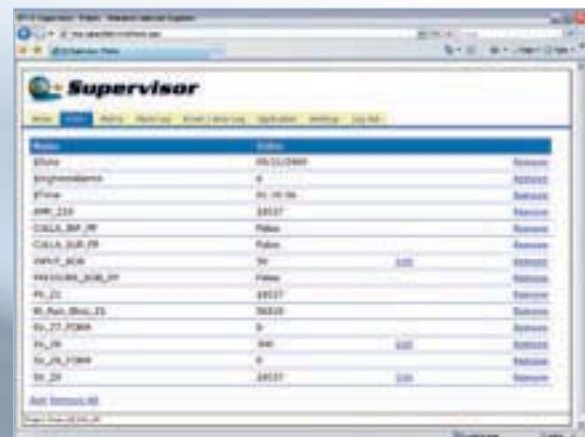
With a brand new data table, created by bringing the vertical and horizontal cursors together, you can analyse your machine's performance in minutes. Reporting is also easier: now you can export data as an image, CSV or directly to a printer.



New data logging.

## Stay in touch at all times

With remote maintenance via the web you can check your application's status from anywhere in the world. Simply log on to see and set values, check the alarm log and acknowledge/clear alarms. Any errors in the past week? See it all while your project is running.



Remote connectivity with the screen.

## Proven run-time benefits

### Health check during run-time

You can view the 'Health Checker' at runtime to monitor each part of your system and protect against overloading. In conjunction with the 'Application Analysis' tool, you can tune your application for optimum performance and maximum reliability.

### Choice of language

CX-Supervisor V3 supports sixteen different European languages, and you can select and change them even while an application is running. Moreover, the runtime environment is fully extendable to support any language using text files.

### Advanced data retrieval and storage

You can gather and store machine data for process analysis from any database. CX-Supervisor also has its own data logging function, including the newly improved data-log viewer.

Run-time



## COMPLETE COMPATIBILITY

Designed specifically for PC-based machine visualisation, CX-Supervisor V3 is perfect for any PC including Omron's robust and high-quality DyaloX purpose-built IPC.

Naturally, CX-Supervisor V3 communicates with a whole range of cutting-edge (as well as older) devices, including Omron's entire range of PLCs, motion devices, temperature controllers and sensors. Moreover, future compatibility with new devices is assured with Omron's 'One Connection' Smart Platform architecture.

For complete multivendor compatibility, CX-Supervisor V3 is an OPC client enabling easy communication whatever devices you have in your machine. This means that CX-Supervisor V3 enhances the 'One Connection' architecture beyond even Omron. In this way CX-Supervisor V3 extends our 'One Connection' strategy to a multivendor world.

## Choose your way of working

CX-Supervisor V3 is highly flexible and will perfectly fit to your way of working. For example, you can choose which Omron PLCs you want to work with: it's compatible with the CS and CJ ranges, the C series and even the CV series, as well as Omron's Trajexia motion devices, ZX and ZS sensors and CelciuX° temperature controllers. And more drivers are continuously being added for registered users.

You can also choose which scripting language you use. CX-Supervisor V3 supports several, including VBScript® and Omron's own language, which enables you to interact with graphical elements on a page, read/write data and send FINS commands to Omron devices.

Omron believes in and fully supports open technologies, so you are guaranteed the freedom to choose devices that best suit your machine or system. As a member of the OPC Foundation, Omron also supports open connectivity via open standards.



## Benefits for developers

### Faster simulation – faster prototypes

CX-Supervisor has always given you fast and easy simulation of HMI and PLC applications, but now with the improved CX-Supervisor V3's integrated simulation you can do them both on one screen – and, with just one click of the mouse.

### New graphics library

CX-Supervisor V3 supports “Smart Graphics” with embedded animations. There's also a new “Point Substitution” feature for easy object connection. Since you can now create your own objects, your virtual machine looks just like a real one. While the included CX-Designer graphics library helps ensure that your HMI and IPC applications always have a consistent look and feel.

### Improved picture handling

The new CX-Supervisor V3 supports JPEG and GIF images and transparency – so you can layer images and create perfect pictures.

### Any colour you want

The new palette tool let's you choose from 16 million.

### .NET web interface

For our advanced users, you can extend your application into a complete web solution.

## A choice of two versions



This is the perfect choice for almost all machine visualisation requirements. Supporting connection of up to 15 devices and up to 500 user-defined points, it is flexible and powerful enough for the control and supervision of a complete machine or an entire manufacturing process. And its easy-to-use Windows® Explorer-style development environment makes simple work of building even the most advanced graphic interfaces.



The Plus version is for those exceptional cases where an application demands a higher number of devices or points than can be handled by CX-Supervisor V3 Machine Edition. It otherwise shares all of the same power and features.

### Product selector

Indicator	Description	Product Code
CX-Supervisor Development Package	Development program and runtime for testing. Does not include a runtime dongle. Includes 12 months free maintenance and upgrades.	CX-SUPERVISOR-V_
CX-Supervisor Development Upgrade Package	Upgrade for the Development program and runtime for testing. Does not include a runtime dongle. Includes 12 months free maintenance and upgrades.	CX-SUPERVISOR-UPGR-V_
CX-Supervisor Runtime Machine Edition	CX-Supervisor runtime CD media including Machine Edition USB dongle.	CX-SUPERVISOR-RUN-ME-V_
CX-Supervisor Runtime PLUS Edition	CX-Supervisor runtime CD media including PLUS Edition USB dongle.	CX-SUPERVISOR-RUN-PLUS-V_
CX-Supervisor Runtime upgrade	Available for all CX-Supervisor V2 customers including a CX-Supervisor runtime CD (no dongle included)	CX-SUPERVISOR-RUN-UPGR-V_

### Quick reference comparison

Feature	Machine Edition	PLUS
ActiveX®	Yes	Yes
VBScript®	Yes	Yes
Recipes	Yes	Yes
Alarm definitions	300	5,000
Animation	Yes	Yes
Max Devices (PLCs etc)	15	256
OPC Connections	Yes	Yes
Max user defined Points	500	8,000
Max point elements	512,000	8,192,000
Max Regular Interval Scripts	10	100
Max No pages	100	500
Supported database formats	MS Access	SQL, ODBC, MS Access, MS Excel, dBase, CSV

**OMRON EUROPE B.V.** Wegalaan 67-69, NL-2132 JD, Hoofddorp, The Netherlands. Tel: +31 (0) 23 568 13 00 Fax: +31 (0) 23 568 13 88 [www.omron-industrial.com/CP1E](http://www.omron-industrial.com/CP1E)

**Austria**

Tel: +43 (0) 2236 377 800  
[www.omron.at](http://www.omron.at)

**Belgium**

Tel: +32 (0) 2 466 24 80  
[www.omron.be](http://www.omron.be)

**Czech Republic**

Tel: +420 234 602 602  
[www.omron-industrial.cz](http://www.omron-industrial.cz)

**Denmark**

Tel: +45 43 44 00 11  
[www.omron.dk](http://www.omron.dk)

**Finland**

Tel: +358 (0) 207 464 200  
[www.omron.fi](http://www.omron.fi)

**France**

Tel: +33 (0) 1 56 63 70 00  
[www.omron.fr](http://www.omron.fr)

**Germany**

Tel: +49 (0) 2173 680 00  
[www.omron.de](http://www.omron.de)

**Hungary**

Tel: +36 1 399 30 50  
[www.omron.hu](http://www.omron.hu)

**Italy**

Tel: +39 02 326 81  
[www.omron.it](http://www.omron.it)

**Middle East & Africa**

Tel: +31 (0) 23 568 11 00  
[www.omron-industrial.com](http://www.omron-industrial.com)

**Netherlands**

Tel: +31 (0) 23 568 11 00  
[www.omron.nl](http://www.omron.nl)

**Norway**

Tel: +47 (0) 22 65 75 00  
[www.omron.no](http://www.omron.no)

**Poland**

Tel: +48 (0) 22 645 78 60  
[www.omron.pl](http://www.omron.pl)

**Portugal**

Tel: +351 21 942 94 00  
[www.omron.pt](http://www.omron.pt)

**Russia**

Tel: +7 495 648 94 50  
[www.omron-industrial.ru](http://www.omron-industrial.ru)

**Spain**

Tel: +34 913 777 900  
[www.omron.es](http://www.omron.es)

**Sweden**

Tel: +46 (0) 8 632 35 00  
[www.omron.se](http://www.omron.se)

**Switzerland**

Tel: +41 (0) 41 748 13 13  
[www.omron.ch](http://www.omron.ch)

**Turkey**

Tel: +90 216 474 00 40  
[www.omron.com.tr](http://www.omron.com.tr)

**United Kingdom**

Tel: +44 (0) 870 752 08 61  
[www.omron.co.uk](http://www.omron.co.uk)

**More Omron representatives**

[www.omron-industrial.com](http://www.omron-industrial.com)

Authorised Distributor:

**Control Systems**

• Programmable logic controllers • Human-machine interfaces • Remote I/O

**Motion & Drives**

• Motion controllers • Servo systems • Inverters

**Control Components**

• Temperature controllers • Power supplies • Timers • Counters • Programmable relays  
• Digital panel indicators • Electromechanical relays • Monitoring products • Solid-state relays  
• Limit switches • Pushbutton switches • Low voltage switch gear

**Sensing & Safety**

• Photoelectric sensors • Inductive sensors • Capacitive & pressure sensors • Cable connectors  
• Displacement & width-measuring sensors • Vision systems • Safety networks • Safety sensors  
• Safety units/relay units • Safety door/guard lock switches